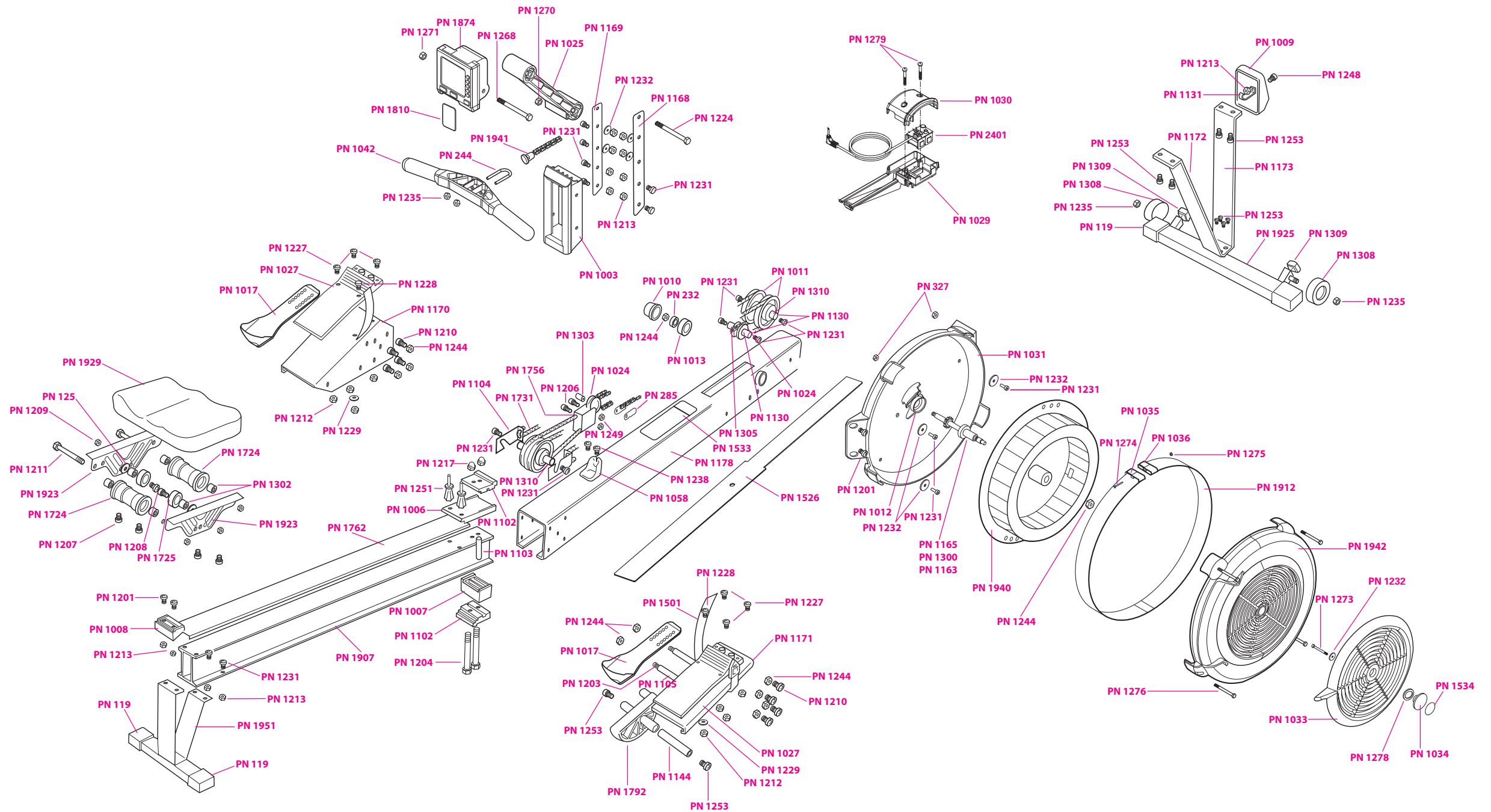


concept 2[®] MODEL D SCHEMATIC For Model D Indoor Rowers made **BEFORE** July 31, 2006





Model D Part Identification List for **MODEL D INDOOR ROWERS** made **BEFORE 07/31/06**

PN	Description
119	Rubber Foot
125	Washer 3/8
232	Bearing R8 22 B/C/D/E
244	U Bolt
285	Chain Connector Small
327	Nut #10 SS
1003	Chain Guide
1006	Top Front Bumper
1007	Bottom Front Bumper
1008	Rear Bumper
1009	End Cap
1010	Bearing Cover
1011	Shock Cord Pulley
1012	17mm Bearing Rubber Cup
1013	R8 Bearing Cup
1017	Flexfoot
1024	Chain Idler Pulley
1025	Monitor Arm Black
1027	Flexfoot Toe Piece
1029	Generator Base
1030	Generator Cover
1031	Flywheel Cover Back D
1033	Damper
1034	Hub Cap
1035	Perf Connector Screw Side
1036	Perf Connector Nut Side
1042	Handle
1058	Handle Hook
1102	Monorail Hanger
1103	Monorail Bolt Tube
1104	SCAM
1105	Hanger Bolt Tube
1130	Axle Shock Cord/Chain Idler Pulley
1131	End Cap Hook
1144	Frame Lock Axle
1163	Sprocket Quiet 14 Tooth D/E
1165	Axle D/E
1168	Chain Guide Bracket Right
1169	Chain Guide Bracket Left

PN	Description
1170	Left Foot Bracket
1171	Right Foot Bracket
1172	Leg Front Short D
1173	Leg Front Long D
1178	Box Frame
1201	Buttonhead Screw 1/4-20 x 3/4 SS Patch C/D/E
1203	Hanger Bolt
1204	Screw 3/8-16 x 5.5 ZP GR5
1206	Travelling Pulley Screws
1207	Screw SL HWMS 10/24 x 1/2 Patch
1208	Screw 3/8-16 x 1.25 Low Profile SH
1209	Nut 3/8-16 BC Nylock
1210	Foot Bracket Screws - Allen Key Head
1211	Screw 3/8-16 x 4.5 BC
1212	Nylock Nut Toe Piece
1213	Nut 1/4-20 ZP
1217	Acorn Nut
1224	Monitor Arm Bolt 4" long
1227	Short Toe Piece Screw
1228	Long Toe Piece Screw
1229	Toe Piece Washer
1231	Buttonhead Screw 1/4-20 x 1/2 SS Patch C/D/E
1232	Fender Washer 1/4 x 1 1/4 BX
1235	Nut 1/4-20 Nylock SS
1238	Socket Screw 1/4-20 x 3/8
1244	Nut 3/8-16 ZP Nylock Zinc
1248	Screw 1/4-20 x 3/4 SS Buttonhead C/D/E
1249	1/4" Nylock Jam Nut
1251	Poly Rivet
1253	Screw 1/4-20 x 5/8 SS Epoxy Patch Buttonhead C/D/E
1268	HCS 3/8 x 3 SS Waxed
1270	Nut Nylock Zinc 3/8-16 ZP
1271	Hex Nut 3/8-16 SS
1273	Damper Screw 10 x 3/4 Pan PH Type B SS
1274	Pan PH #6 x 2SS
1275	#6 Nut Stainless Steel
1276	Flywheel Cover Bolt 10 x 3 Pan PH SS
1278	Wave Washer
1279	#8 Pan Head Phillips SS Screw

PN	Description
1300	17mm Bearing
1302	Seat Spacer
1303	Traveling Pulley Spacer
1305	Idler Pulley Spacer
1308	Caster Wheels
1309	Caster Stop
1310	SC Pulley Spacer
1501	Foot Strap
1526	Return Mechanism Cover
1533	Technique Label
1534	Hubcap Label
1724	Top Roller
1725	Bottom Roller
1731	Shock Cord
1756	Travelling Pulley Assembly C/D/E
1762	Track/Tape Assembly w/Rivet
1792	Frame Lock
1810	Log Card with Sleeve
1874	PM3 Monitor RoHS
1907	Monorail Assembly D w/Track
1912	Outlet Perf w/Connectors and Screw Assy D
1923	Seat Carriage (Left and Right)
1925	Front Foot w/Casters
1929	Seat Top w/Screws
1940	Flywheel Assembly (machines made prior to 10/30/06)
1941	Nickel Chain w/Connector and Swivel C/D/E
1942	Flywheel Cover Front Assembly
1951	Rear Leg Model D w/Feet
2401	Sensor Coil